

PROFILEmiami

Your Guide To South Florida Real Estate

BI-WEEKLY UPDATE

COMMERCIAL | RESIDENTIAL | DEVELOPMENT

MIAMI | FORT LAUDERDALE | PALM BEACH

30 PALM AVENUE ON MIAMI BEACH'S FAMED PALM ISLAND HITS THE MARKET FOR \$43 MILLION



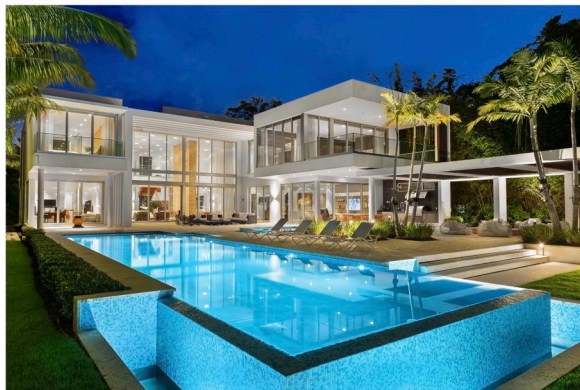
A contemporary estate located at 30 Palm Ave. on Miami Beach's famed Palm Island has hit the market for \$43 million. Magnificently redesigned, the 2-story waterfront estate on guard-gated Palm Island is situated on a manicured 32,000-square-foot lot, offering 100 feet of sparkling waterfront on Biscayne Bay. The 13,144-square-foot bright and airy gated residence features nine bedrooms (including two staff rooms), eight bathrooms, and one half-bathroom. The residence is being sold furnished and is listed with Jill Eber and Jill Hertzberg of The Jills Zeder Group, affiliated with Coldwell Banker Realty in Florida.

Tour the residence @PROFILEmiami:

[Tour the Residence](#)

30 PALM AVENUE ON MIAMI BEACH'S FAMED PALM ISLAND HITS THE MARKET FOR \$43 MILLION

March 26, 2022



A contemporary estate located at 30 Palm Ave. on Miami Beach's famed Palm Island has hit the market for \$43 million. Magnificently redesigned, the 2-story waterfront estate on guard-gated Palm Island is situated on a manicured 32,000-square-foot lot, offering 100 feet of sparkling waterfront on Biscayne Bay. The 13,144-square-foot bright and airy gated residence features nine bedrooms (including two staff rooms), eight bathrooms, and one half-bathroom. The residence is being sold furnished and is listed with Jill Eber and Jill Hertzberg of The Jills Zeder Group, affiliated with Colwell Banker Realty in Florida.

"This stunning modern waterfront home located in the prestigious section of guard-gated Palm Island is ideal for a family or couple wanting incredible amenities as well as an amazing estate-sized lot," said Jill Eber of The Jills Zeder Group. "The property's southern exposure provides natural light to flow through tall walls of glass into the home to enjoy true indoor-outdoor, luxury living at its finest."

30 Palm Ave. features distinctive features include large plank rich hardwood floors, an interior elevator, pet room, full waterfront gym, movie theater with 11 comfortable leather recliners and a 132" projection screen, and an additional second-floor family/media room plus waterfront recreation room.

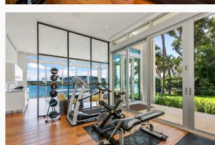
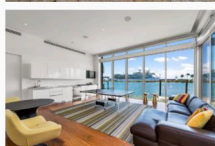
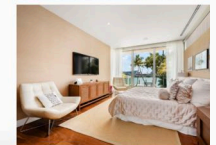
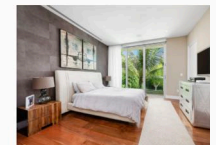
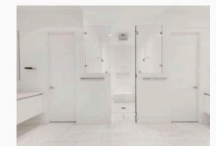
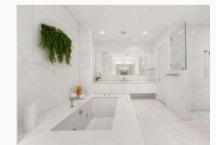
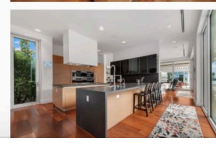
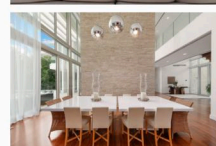
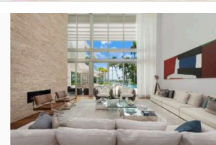
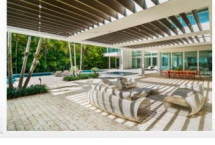
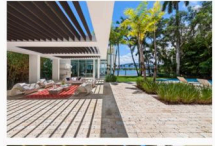
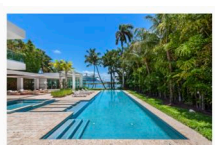
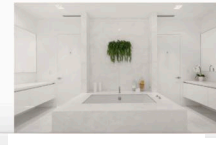
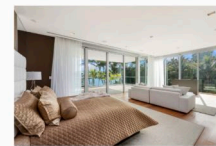
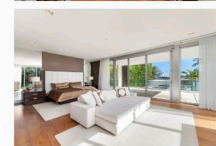
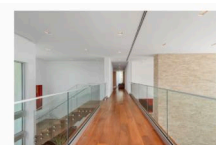
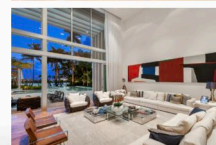
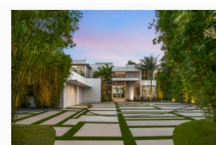
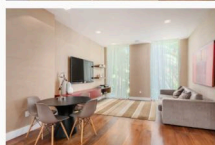
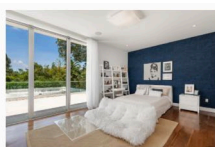
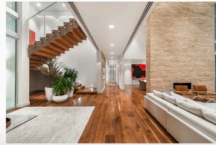
The residence offers an expansive living room and dining area boast soaring ceilings, are separated by a custom-built stone wall for privacy, and lead to a beautiful family room. The gourmet kitchen features a black granite center island, countertops and backsplash; top-of-the-line Wolf gas range, two Sub-Zero refrigerator/freezers, custom cabinetry, a butler's pantry, and industrial-sized walk-in freezer.

The private second-floor principal suite is surrounded by walls of glass, and features a large private terrace overlooking the pool deck below with views to the water. The principal bathroom boasts exquisite Carrera marble walls and floors, a full walk-in rain shower with dual shower heads, sunken spa tub with water jets, and separate water closets. The additional eight bedrooms are spacious and uniquely designed.

The tropical outdoor area features a large pool with a Jacuzzi, coral stone-paved pool deck, professionally designed landscaping with tropical plants and soaring palms, full outdoor lighting, comfortable covered seating areas, a summer kitchen and capturing views to the downtown skyline. The residence also features a private 100-foot IPE wood dock that can accommodate a large vessel, and direct access to Biscayne Bay and the Atlantic Ocean. The home offers parking space for 12 cars, as well as a 4-car garage.

Located just south of Hibiscus Island, Palm Island is a man-made island in Biscayne Bay. The entire island encompasses 82 acres and offers amazing vistas of the downtown Miami skyline and breathtaking sunset views. It is ideally located just minutes from downtown Miami, Miami Beach and the beaches, fine dining and shops, cultural venues, the Design District, prestigious schools and Miami International Airport.

"Palm Island is one the most sought-after residential locations in South Florida," said Jill Hertzberg of The Jills Zeder Group. "Embodying the pinnacle of South Florida waterfront luxury living, this exclusive island beckons with breathtaking views and proximity to the best attractions and schools Miami has to offer."



Copyright © 2022 Duree Company